

59th ANNUAL WINTER MEETING

New Jersey Christmas Tree Growers' Association

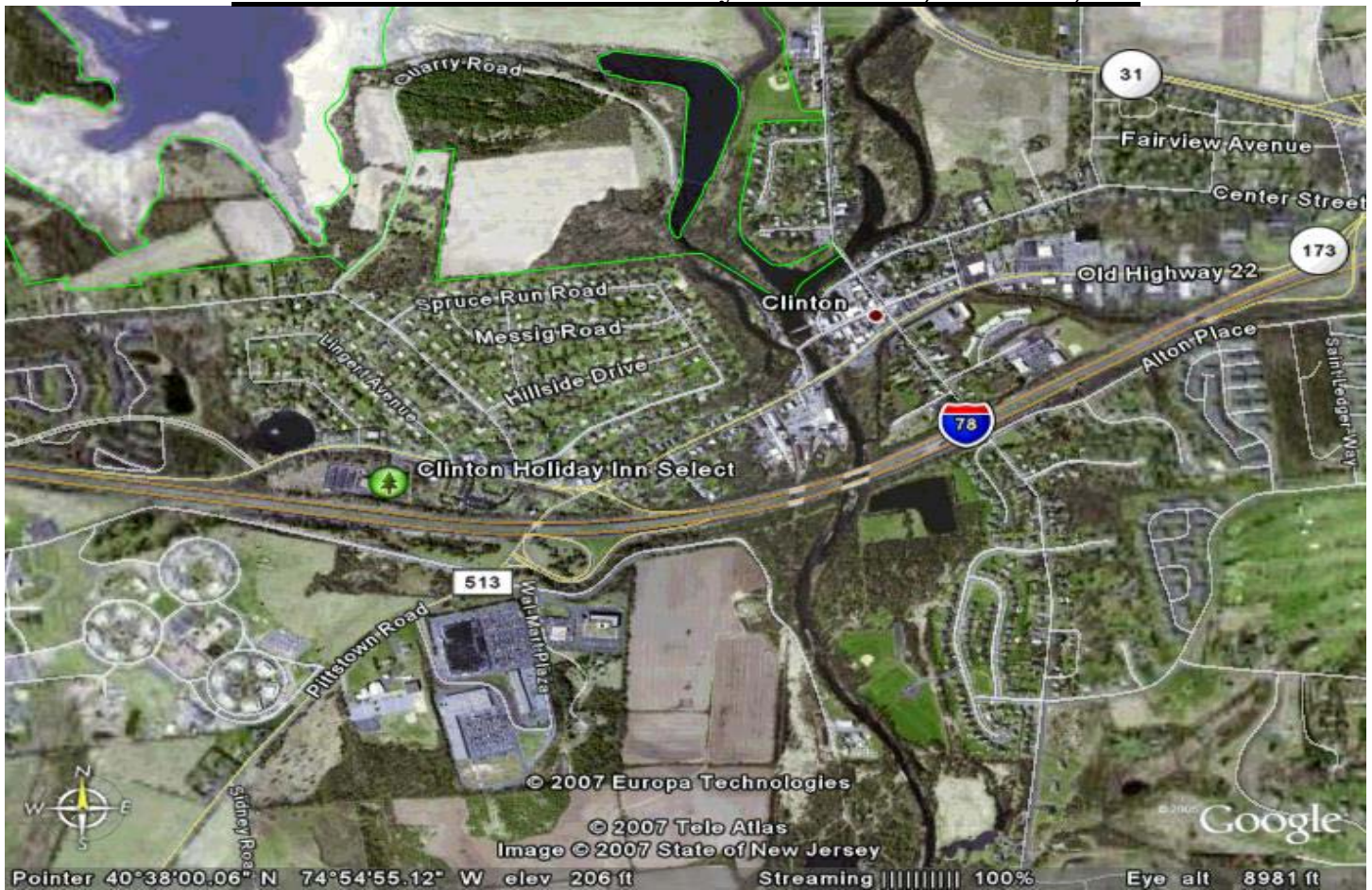
Clinton Holiday Inn Select, 111 West Main St, Clinton, NJ 08809

January 31, 2009

- 8:15-9:00** **REGISTRATION** - Coffee & Danish - Visit with Exhibitors
- 9:00-9:15** **WELCOME** By President Anne Edwards
- 9:15-10:15** **RICKY M. BATES** – Penn State University, Associate Professor of Ornamental Horticulture
Speaking on Pot-in-Pot production of conifers and containerized conifer "living tree" market.
- 10:15-11:15** **SARAH PICKEL** - PA Integrated Pest Management Program, PA Department of Agriculture
Speaking on a typical season of scouting for insects, timing and types of control applications.
- 11:15-11:30** **BREAK** - Visit with exhibitors and socialize
- 11:30-12:00** **SARAH PICKEL** – PA Integrated Pest Management Program, PA Department of Agriculture
Speaking on identification and control of Douglas fir Needle Midge. Timing, chemicals and methods.
- 12:00-1:00** **LUNCH** - Visit with exhibitors
- 12:30-1:00** **JOHN CURTIS** – NJCTGA Director and Grower
Speaking on exotic species. What works and what doesn't. John has more than 40 varieties on his farm with varying success.
- 1:00–2:00** **ROUND TABLE PANEL OF GROWERS AND EXPERTS**
Your chance to ask how others do it. Our panel of long time growers and professionals will answer questions and discuss issues provided by the membership.
- 2:00-3:00** **PATRICIA D HASTINGS** – Pesticide Safety Education Program Coordinator, Rutgers New Jersey Agricultural Experiment Station, Cooperative Extension Pest Management Office
Speaking on 'Respiratory Protection for Pesticide Applications'.
CORE credits available.
- 3:00-3:30** **ANNUAL BUSINESS MEETING** – President Anne Edwards
State Contest and People's Choice Awards, River Friendly Farm Award and Details on the River Friendly Farm Program
- 3:30** **WRAP-UP** – President Anne Edwards

Pesticide Recertification Credits will Be Available

Directions to Clinton Holiday Inn Select, Clinton, NJ



Hotel Contact Information:

Holiday Inn Select of Clinton, New Jersey
111 West Main St.
Clinton, New Jersey 08809
908-735-5111
908-730-9768 FAX
www.hisclinton.com
tmiller@hisclint.meyerjabara.com

NJCTGA Contact Information:

New Jersey Christmas Tree Growers' Assn.
Andrew Alpaugh
PO Box 211
Stockton, NJ 08559-0211
609-397-0096 (Office)
908-256-3329 (Day of Meeting)
execsecretary@njchristmastrees.org

Please contact hotel directly for driving directions as needed. Thank You.